

FLUSHMATE® Genuine Replacement Parts

Installation:

C-100500-K Flush Cartridge

⚠ CAUTION: Pressure Vessel, to prevent injury turn water supply off and flush the unit prior to servicing.

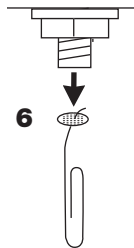
If the air inducer is doing its job of drawing air into the *FLUSHMATE*® vessel at the beginning of the refill cycle, then check the cartridge assembly for any leaks.

Here's how to do that:

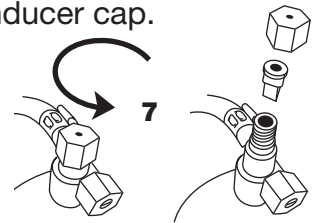
1. Turn off the water and flush the toilet.
2. Hold the actuator down until the vessel is completely drained.
3. Take a cup of water and pour it into the cartridge housing area.
4. Turn on the water supply.
5. If you see a steady flow of bubbles coming from the center of the cartridge area, that means the cartridge has a leak and should be replaced. If you don't see any bubbles and if you have a flush handle-actuated system, you may have to disconnect the rod itself in order to remove the cartridge.

Remember: You must first turn the water supply off, and flush the toilet.

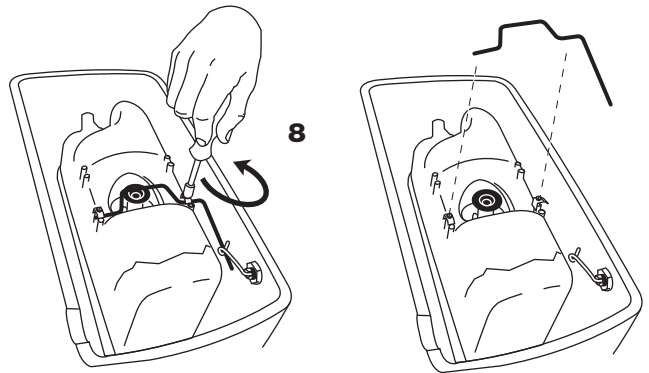
6. Remove inlet screen from lower supply shank using a paper clip. Install new inlet screen using finger tip.



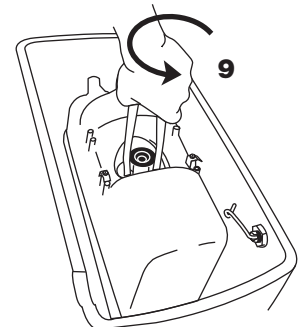
7. Unscrew the air inducer cap from the upper supply. Pull the duck bill valve out of the air inducer cap. Install new duck bill valve into upper supply and reinstall air inducer cap, finger tight only.



8. Actuator rod removal is a simple procedure using a screwdriver. You only need to loosen one screw to remove the rod.



9. Remove the cartridge assembly by inserting the pliers handle like you see here or with our *FLUSHMATE* 2-in-1 wrench. Remove the cartridge assembly by turning in a counter-clockwise direction.

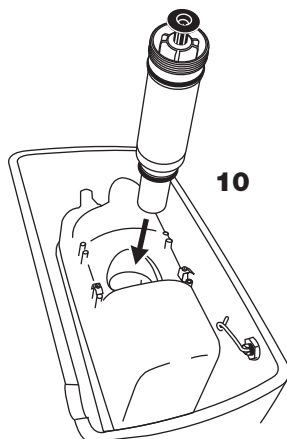


Continued on other side.

Installation:

C-100500-K Flush Cartridge

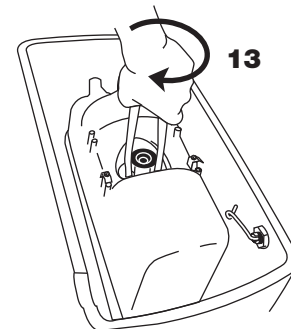
10. Once the cartridge assembly is removed, examine the exposed o-rings on the cartridge. Do you see any signs of wear or damage? If a defect is observed, replace the cartridge.



11. Before you reinstall or replace the cartridge, first turn the water supply back on and allow the water to flow for about 30 seconds. If there is any debris that has been trapped inside the *FLUSHMATE* unit, this should clear it away. Look inside the *FLUSHMATE* unit to make sure there is no debris inside the sealed surface. Debris or defects in the sealed surface can cause the unit to continue to run on.

12. Then, reinstall the cartridge by turning the cartridge assembly counter-clockwise while pushing down and applying pressure to avoid cross-threading. Stop when you hear an audible click, caused by the threads engaging.

13. Next, turn clockwise to install the cartridge back into position until a thread or two of the *FLUSHMATE* unit are showing above the cartridge.



14. Then, turn the water back on and keep slowly turning the cartridge in a clockwise direction until the water stops running into the toilet bowl. Once the water stops, no additional adjustments to the cartridge installation should be required.

15. Install the flush rod if it was removed and make sure there is no interference in the proper adjustments to actuator is made. The actuator may also need to be adjusted if you have a push button model. In either case, the proper clearance between the flush rod or push button to the actuator is important to ensure proper flushing actuation.

16. There may be rare situations where this service action does not stop the water from running. This may be a sign that you need to replace the cartridge assembly itself.