

10" Rough-in

## Features:

### □ 20-300

- Vitreous China
- Low Consumption 1.6 GPF (6.0 LPF)
- Round Front Bowl
- 10" Rough-In
- Pressure Vessel Inside
- Dual fed siphon jets
- Fully glazed, 2" trapway
- Non-Sweating insulated tank
- Chrome, Metal Front Tank Lever
- 2 Color Matched Bolt Caps Included
- Toilet seat not included

## Technical Information:

### Included Components:

- Combination 20-300
- Bowl UF-21-342
- Tank 28-385

### Other Tank Options: (bowl to be purchased separately)

- N/A

## Fixtures:

Configuration	Two-piece, Round Front Toilet
Water per Flush	1.6 gpf (6.0 lpf)
Rough-In	10"
Height	29 1/16"
Width	20 3/16"
Depth	25 3/4"
Trapway	2"
Large Water Surface	8 11/16" x 6 5/16"
Product Weight	87 lbs

### Accessories: (to be purchased separately)

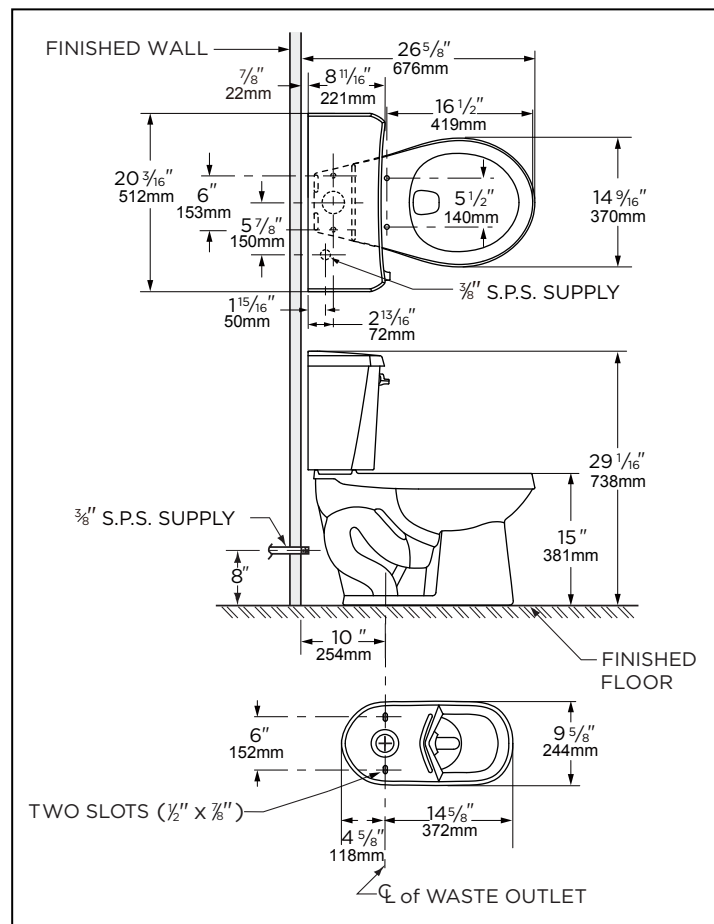
Soft Closed Toilet Seat	99-217
-------------------------	--------

## Colors:

- White
- Other: Refer to Price Book for additional colors

## Warranty:

- Limited Lifetime Warranty - see website for detailed warranty information



**NOTES:** All dimensions are in inches and millimeters. Illustrations may not be drawn to scale.

### IMPORTANT:

Dimensions of fixtures are nominal and may vary within the range of tolerances established by ASME standard A 112.19.2. THIS FIXTURE QUALIFIES ACCORDING TO ASME TEST PROCEDURES AS A LOW CONSUMPTION WATER CLOSET WITH AN AVERAGE CONSUMPTION OF 1.6gpf (6 Lpf) OR LESS.