

# SELECT MODE + FEATURES

Contains FCC ID: 2ADHKR30M  
Contains IC: 20266-R30M

This device complies with Part 15 of the FCC Rules. Operation is subject to the following two conditions: 1. This device may not cause harmful interference, and 2. this device must accept any interference received, including interference that may cause undesired operation

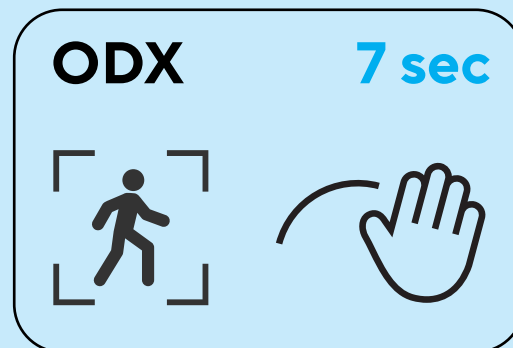
There are **three** flush-activation modes:

Factory Settings:  
OD and  
24-hour Auto Flush

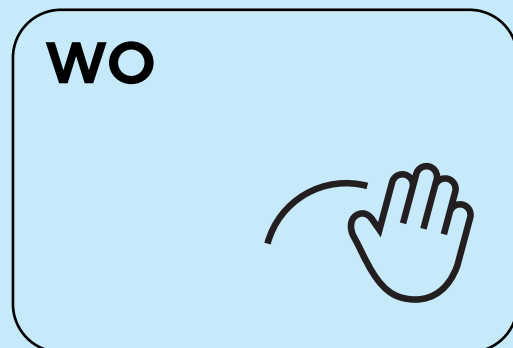
Object Detection



Object Detection Extra Delay



Wave Only

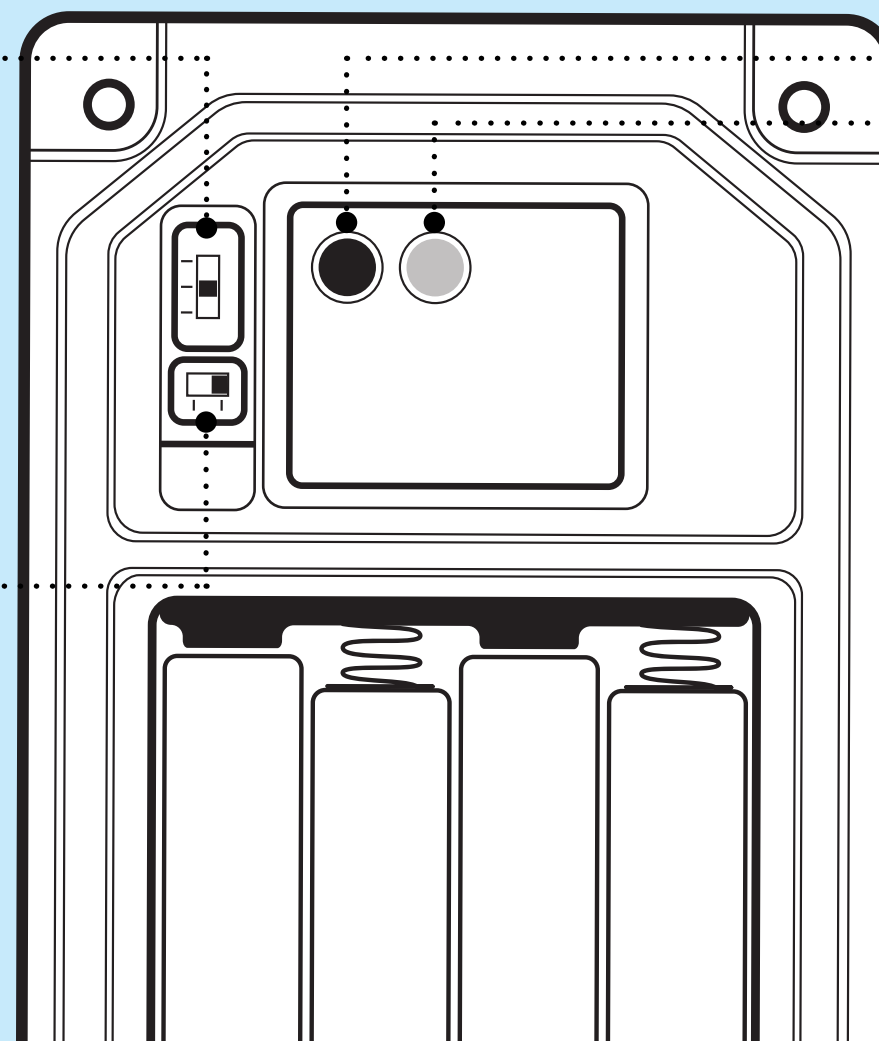
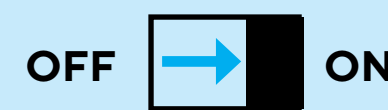


Toggle lever to select flush-activation mode.



**Sensing Distance:**  
OD/ODX: Up to 32" (81 cm)  
WO: 2" (5 cm)

**24-hour Auto Flush**  
Enables an automatic flush 24 hours after last flush. Recommended for Commercial environments.



**Red LED**  
**Yellow LED**

**Power Indication:**  
Slow blink 3x on power up (Yellow + Red LED).

If Sensor or Flush Module batteries are low, the Sensor Wall Module LED will blink 2x after flush.

Refer to troubleshooting section for complete details

**Sensor Indication:**  
1x yellow blink when wave or object detected

## TROUBLE-SHOOTING

Questions or concerns?

Visit our website:

[flushmate.com/i-flush](http://flushmate.com/i-flush)

or call customer service

**800.533.3460**

## WARRANTY

### I-Flush™ Limited Warranty Summary

**Flushmate®**  
ISO 17025 Certified  
30075 Research Drive  
New Hudson, MI 48165  
800-533-3460, 248-446-5300  
[www.flushmate.com](http://www.flushmate.com)

**FLUSHMATE**

ISSUE:	POSSIBLE CAUSE:	SOLUTION:
2x Red LED blinking on Sensor Wall Module after flush.	<ul style="list-style-type: none"> <li>Low Battery in the Flush Module or Sensor Wall Module</li> </ul>	<ul style="list-style-type: none"> <li>Check and replace batteries in Flush Module and Sensor Wall Module.</li> <li>Calibrate system.</li> </ul>
No LEDs on Sensor Wall Module when using wave or object detection mode and does not flush except if Override Button is used	<ul style="list-style-type: none"> <li>Depleted Sensor Wall Module or Flush Module batteries</li> <li>Sensor Wall Module did not detect object or wave</li> <li>Sensor Wall Module reset delay</li> <li>Sensor Wall Module and Flush Module not calibrated</li> </ul>	<ul style="list-style-type: none"> <li>Wait 20 seconds after last flush and try again.</li> <li>If still no flush, check and replace batteries in Flush Module and Sensor. Recalibrate system</li> <li>Contact Flushmate Support at <b>800.533.3460</b></li> </ul>
No flush when Override Button is pressed	<ul style="list-style-type: none"> <li>Delay between flushes</li> <li>Depleted Flush Module batteries</li> </ul>	<ul style="list-style-type: none"> <li>Replace Flush Module batteries. If issue persists, visit <a href="http://Flushmate.com">Flushmate.com</a> or call customer service at <b>800.533.3460</b></li> </ul>
Unit flushes unexpectedly	<ul style="list-style-type: none"> <li>Unexpected object detected (toilet seat lid, stall door, etc)</li> <li>Sensor Wall Module wall modules installation height too low</li> </ul>	<ul style="list-style-type: none"> <li>Verify distance between bottom of Sensor Wall Module and toilet seat lid (step 7)</li> <li>Repeat calibration process</li> </ul>
Flush Module actuation heard but toilet does not flush	<ul style="list-style-type: none"> <li>Distance between Flush Module and Actuator needs adjustment.</li> </ul>	<ul style="list-style-type: none"> <li>Verify distance between Flush Module and Actuator. (step 4)</li> </ul>

Flushmate, LLC ("Flushmate"), warrants each Flushmate Pressure Assisted System against defects in materials and workmanship. Flushmate's limited warranty does not cover abuse, misuse, vandalism, or damage caused by Acts of God or other matters beyond Flushmate's control, such as use of harmful chemicals, modifications to or faulty installation of the system, or improper or deficient

plumbing. You can file a claim by email, telephone or regular mail by following the instructions found in the Limited Warranty which can be obtained at [www.flushmate.com](http://www.flushmate.com) or by requesting a free copy by telephone at (800)-533-3460. If you submit a valid claim, Flushmate at its discretion, will repair or replace your defective product, or provide a refund, as your exclusive remedy.

This is only a general summary of Flushmate's limited warranty so it is important to note that the specific terms, conditions, restrictions, limitations and exclusions, including the duration of the warranty, are contained in the actual Flushmate Limited Warranty. In case of a conflict with the above summary, the complete warranty terms will prevail.

FLU-MFG 7026 1122

**FLUSHMATE**

# I-Flush™

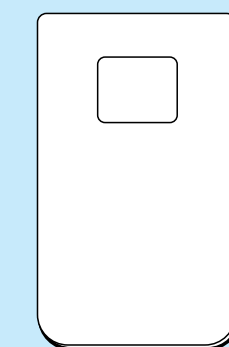
## Automatic Flushing System

I-Flush is compatible with most two-piece pressure-assisted toilets equipped with Flushmate 503 or 504 Series

## COMPONENTS, TOOLS + HARDWARE

Tools that may be required to complete installation: Flat and phillips head screw driver, drill & 3/16" or 5mm drill bit, channel locks

Cover Plate, Sensor Wall Module

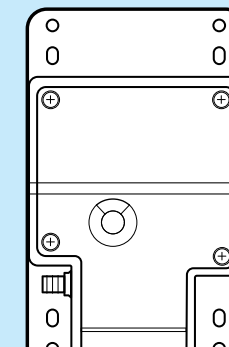


These parts ship assembled.

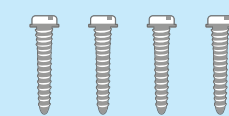
Allen Wrench



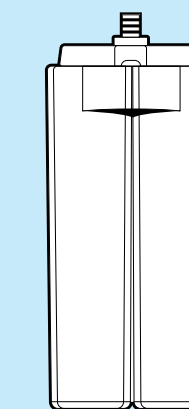
Flush Module



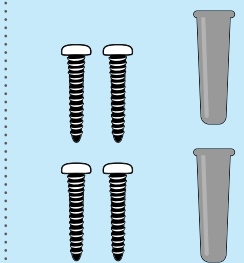
Flush Module Screws (4)



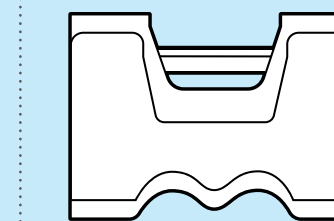
Battery Pack



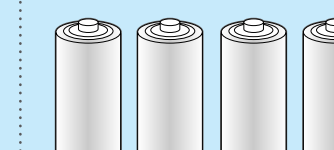
Wall Mounting Screws + Anchors (4 sets)



Battery Pack Holder



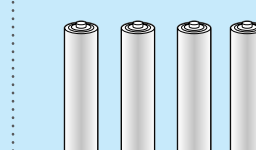
C Batteries (4)



Override Button



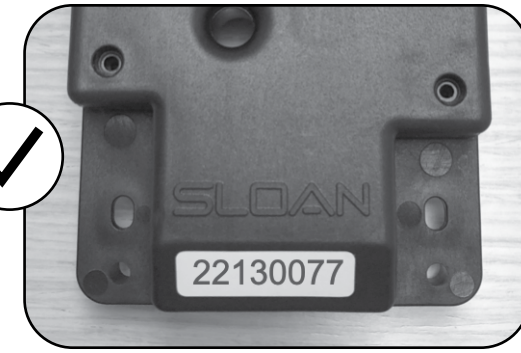
AA Batteries (4)



# 1 CONFIRM SERIAL NUMBERS MATCH



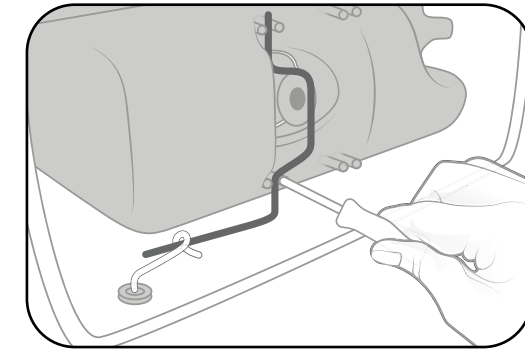
Locate Serial Number on Sensor Wall Module.



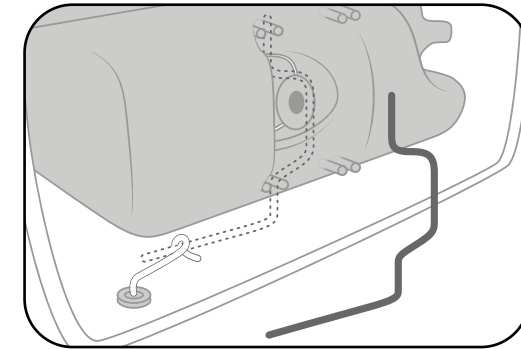
Locate Serial Number on Flush Module.

**IMPORTANT:**  
The Sensor Wall Module and Flush Module in each kit are programmed to work together. Do not interchange components from different kits.

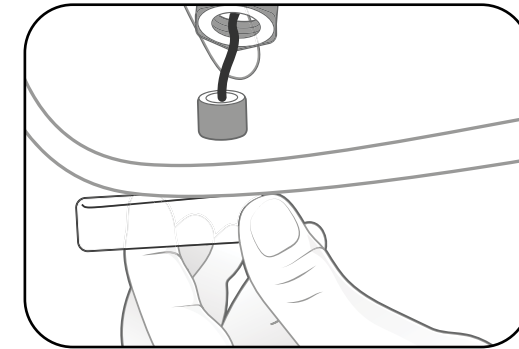
# 2 PREPARE TANK



Remove Retainer Clips.

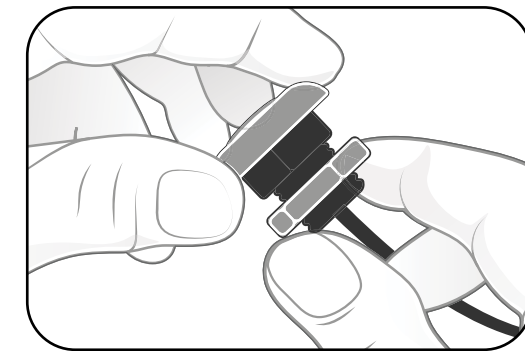


Remove Flush Rod.

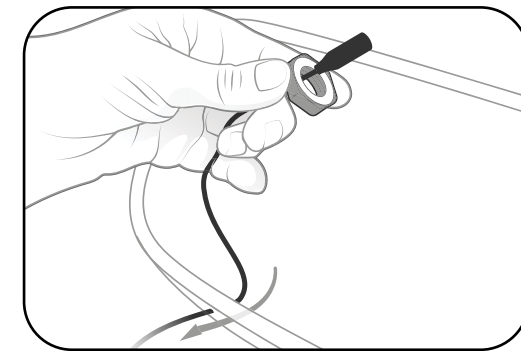


Remove Flush Handle.

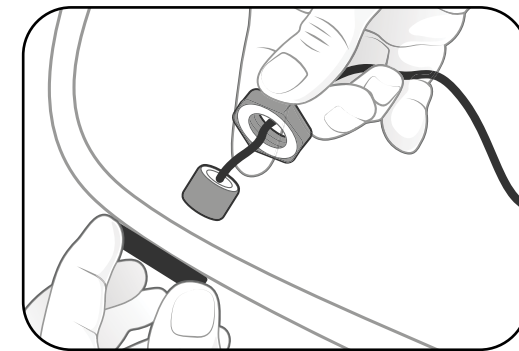
# 3 INSTALL OVERRIDE BUTTON



Remove nut on Override Button Assembly before install.



Feed end of cable through hole in tank. Slide nut back on cable end.



Rethread nut on inside of tank (hand tighten).

## IMPORTANT:

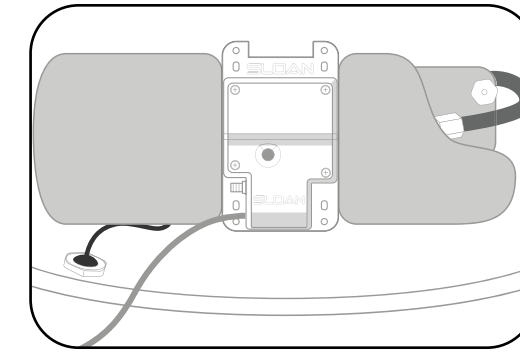
**Do not use chemicals inside your toilet or toilet tank. Doing so will damage the Flushmate products and void your warranty.** Please read Warranty Information for complete details.



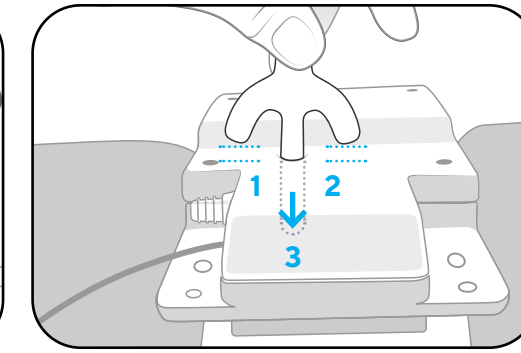
This system is not designed for use with other toilet tanks or typical top of tank push-button toilets.

# 4 INSTALL FLUSH MODULE

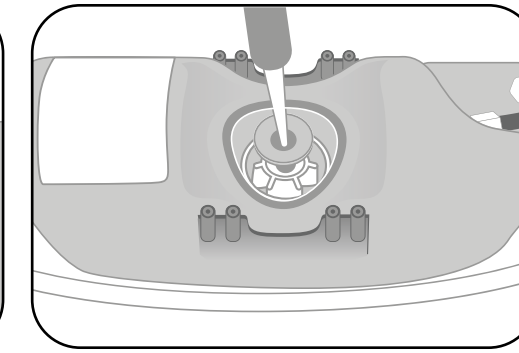
If necessary, make Actuator adjustments.



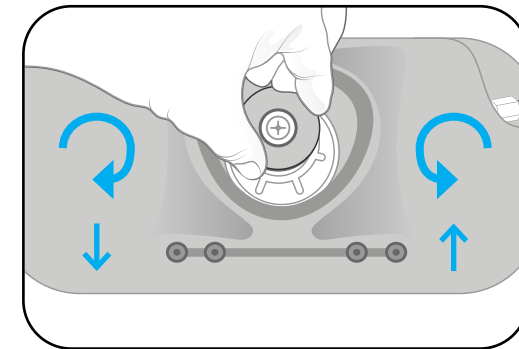
Position Flush Module over Actuator (do not secure yet).



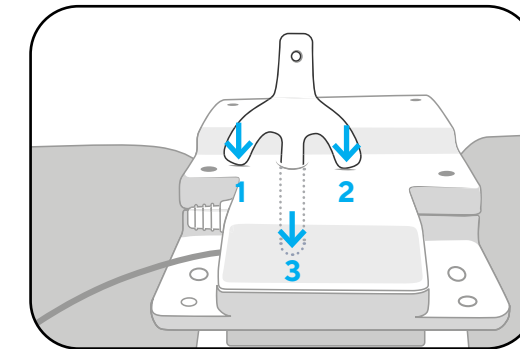
Insert Depth Gauge into hole on top of actuator. If there are not three points of contact, make adjustments.



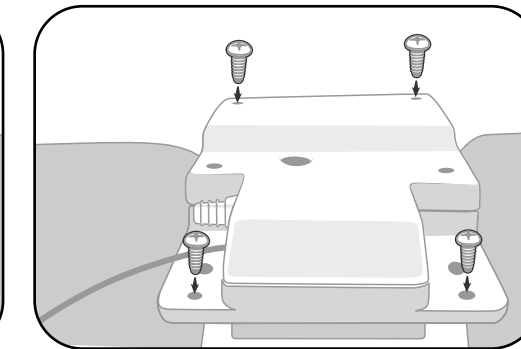
Loosen set screw on Actuator to make height adjustments.



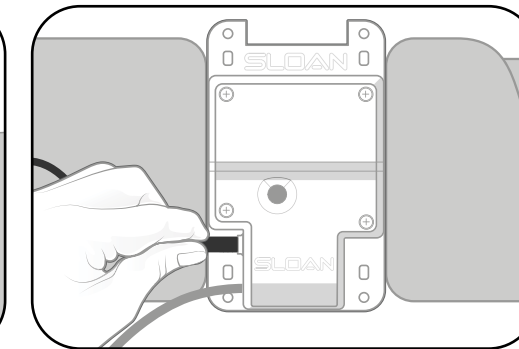
Turn Actuator clockwise to lower and counter clockwise to raise.



Depth Gauge must contact the bottom of hole (3) and at the top of the Actuator under each arm (1, 2).



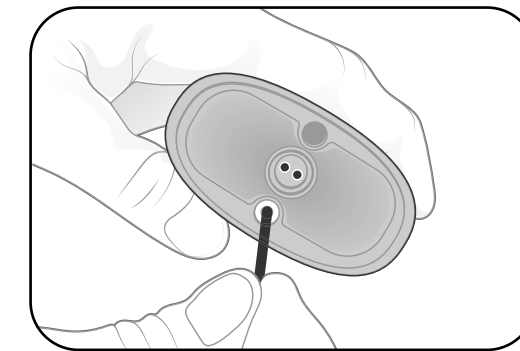
Tighten set screw on Actuator. Secure the Flush Module with four screws supplied.



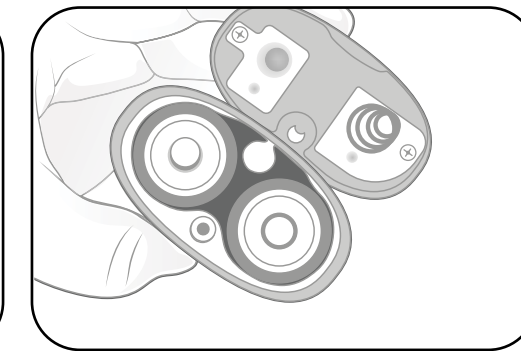
Plug Override Button cable into Flush Module.

# 5 INSTALL BATTERY PACK

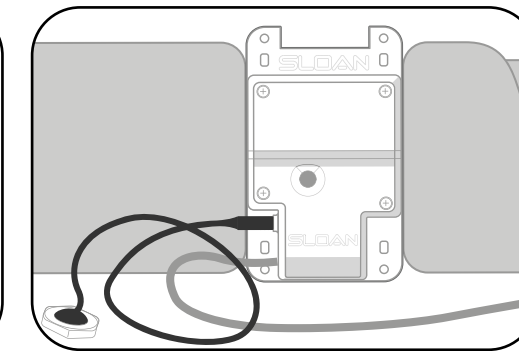
Battery Holder is optional with smaller tanks.



Remove cover on Battery Pack + Install Batteries.



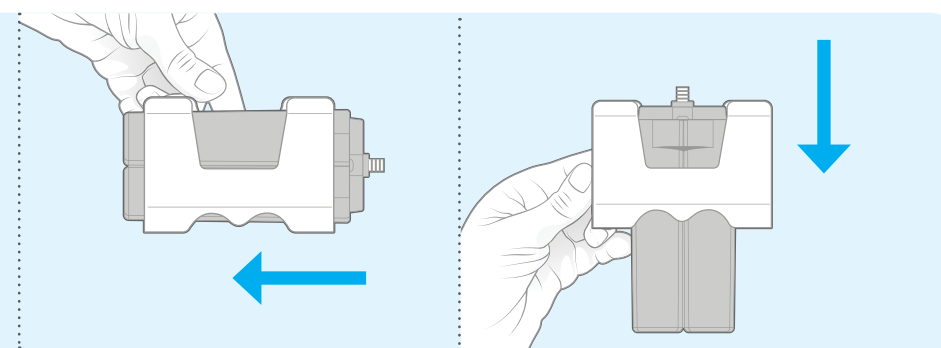
Reinstall cover and place in holder. Do not pinch wiring.



Connect Flush Module to Battery Pack then place in tank.

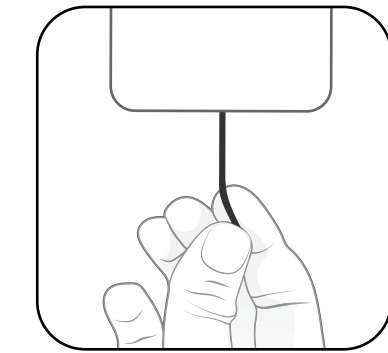
## Optional Battery Pack Holder

The Battery Pack Holder can be placed in the optional holder in two configurations. The tank size will determine placement.

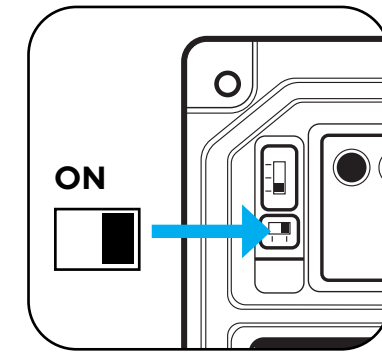


# 6 SELECT SETTINGS

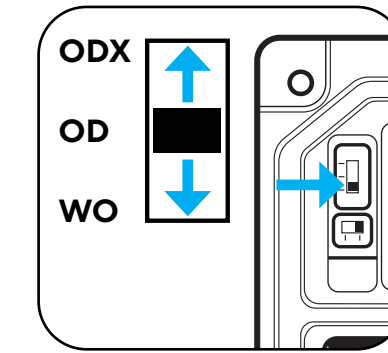
**Factory settings:**  
Flush Activation: OD  
24-hour Auto Flush: OFF



Use allen wrench to remove set screw / Cover Plate.



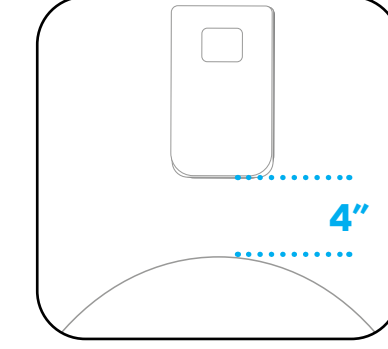
Optional: Select **24-hour Auto Flush** mode.



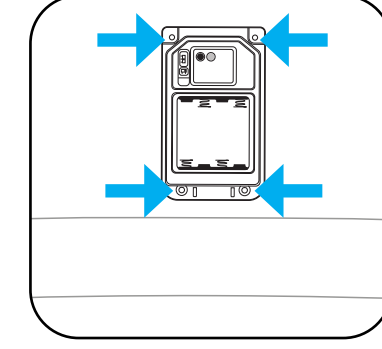
Toggle lever to select flush-activation mode.

# 7 INSTALL SENSOR

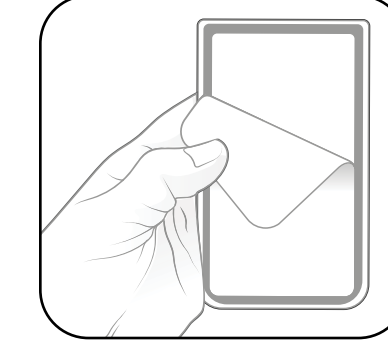
**Use caution!**  
Tape cannot be repositioned and may cause wall damage if removed.



Bottom of Sensor Wall Module should be 4" (10 cm) above top of toilet seat



Mark install location in holes of Sensor Wall Module.

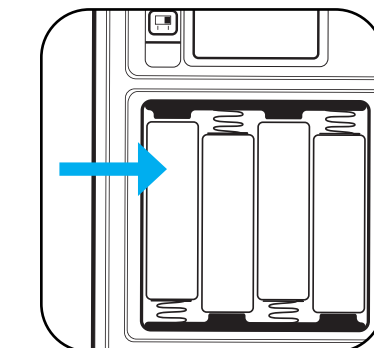


Attach Sensor Wall Module to wall with adhesive pad or screws/anchors.

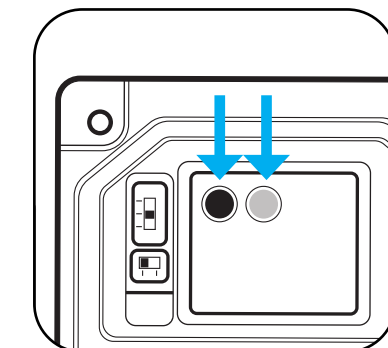
# 8 CALIBRATION

**Important!** Before you begin, remove all non-permanent objects from work area (people, buckets, tools).

Calibration will start **immediately** after installing the batteries and will take approximately **five minutes**.



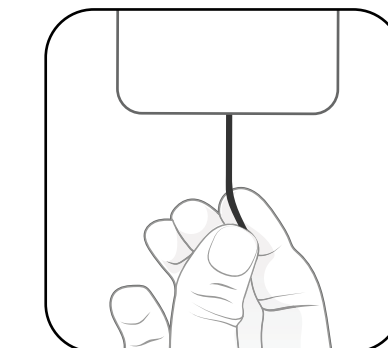
Install four AA Batteries in Sensor Wall Module and immediately leave work area.



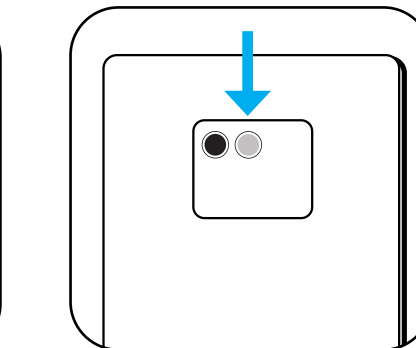
Red LED will start blinking (30 seconds). Yellow LED will blink while system is calibrating



Wait 5 minutes before re-entering area



Secure Sensor Wall Module cover plate with set screw.



Test Sensor Wall Module and override button based on the settings selected in step 6.

**Need Help?** Please refer to the troubleshooting section or call **800.533.3460**